

## In this issue:

- Profile Spotlight: Charlie McClary
- Next Generation Data Centers Workshop agenda available
- 2025 Midwest RCD Annual Meeting - Register!
- New Affinity Group - Globus Compute
- ICICLE Educational Fellows Program
- Student Opportunities

# Midwest Research Computing and Data Consortium

## Midwest RCD Newsletter

February 12, 2025



### Midwest RCD Profile Spotlight: Charlie McClary

Charlie McClary, Manager of Research Storage at Indiana University

**Series:** Exploring the Landscape of Midwest Research Computing and Data Consortium

This is a series where we're diving into the world of the Midwest Research Computing and Data Consortium, exploring its members, the challenges, and future prospects. We had the opportunity to speak Charlie McClary, Manager of Research Storage, who shared their insights on the field.

Charlie is a member of the Midwest RCD slack instance, contact them if you'd like to collaborate or learn more about their work.

[Read the interview with Charlie McClary](#) →

[Recommend a colleague for a Profile Spotlight interview](#) →

## Midwest Research Computing and Data Consortium Annual Meeting



### CALL FOR PARTICIPATION!

The Midwest RCD Consortium Annual Meeting is a 1.5-day conference at Case Western Reserve University in Cleveland, Ohio, bringing together research computing and data professionals to exchange insights, explore innovations, and expand their networks.

Engage in discussions on emerging trends, discover innovative approaches to research computing, and connect with peers across the region. Whether you're new to the field or an experienced professional, this event welcomes all who are involved in research computing and data services.

[Register Early](#)

[Submit a Proposal](#)

[Students: Apply for the Student Experience Program](#)

## Next Generation Data Center Workshop

The Midwest RCD Consortium's Next Generation Data Centers Workshop, happening February 25-26, 2025, at Indiana University Indianapolis, features top data center architects, vendor experts, and infrastructure leaders. Get an inside look at the future of data centers, chip requirements, and real-world industry stories.

[Go to Workshop Page](#)

## NEW AFFINITY GROUP! GLOBUS COMPUTE

Are you looking for ways to improve how researchers and staff use Globus Compute in research computing environments? Join our group to learn, share, and grow.

[Learn More About the Globus Compute Affinity Group](#)



**ICICLE**  
Intelligent CyberInfrastructure with  
Computational Learning in the Environment



## ICICLE Educational Fellows Program Announcement

The National Science Foundation-funded AI Institute for Intelligent Cyberinfrastructure with Computational Learning in the Environment (ICICLE) is now accepting applications for its 2025 Educational Fellows Program.

Graduate students, postdoctoral fellows, and early-career educators and researchers from all domains and disciplines who are actively enrolled in or formally affiliated with a US-based institution, are eligible to apply. Those interested in developing skills and/or posing research questions using AI-enabled cyberinfrastructure and knowledge systems to support areas such as digital agriculture, food access and security, and animal ecology are strongly encouraged to apply.

[For more information about or to apply to the program](#)

Register to attend an informational webinar on February 13, 2025 at  
1:00 PM ET

## Student Opportunities

Know an event to include here? [Submit your upcoming student opportunity](#).

---

Accepting applications NOW! • SC25 in St. Louis, MO

### [\*\*Lead Student Volunteers - A Pathway to Leadership\*\*](#)

Lead student volunteers (LSV) are valued leaders in student programs and can have a significant, positive impact on the SC conference. LSVs are experienced student volunteers who have demonstrated a passion for SC and desire to make a greater volunteer contribution to the field. As a member of the Lead Student Volunteer program you get real-time exposure to creating large-scale events, providing you the exposure and experience of being a full committee member at SC. If any of the above sounds interesting to you, apply to be an LSV!

---

Accepting applications NOW!

### [\*\*Statewide California Earthquake Center Internships\*\*](#)

Through hands-on research and professional development, SCEC interns acquire skills in data analysis, problem-solving, and systems thinking, collaborating with a diverse community of experts from over 90 institutions. SURE offers immersive, in-person research, while SOURCES provides accessible, remote opportunities. Both programs empower students to deepen their knowledge, expand professional networks, and contribute to impactful projects that address pressing geoscience challenges.

---

Applications due March 7, 2025

### **[Department of Defense High-Performance Computing Internship Program](#)**

The Department of Defense's (DoD) High Performance Computing Modernization Program (HPCMP) sponsors two summer research opportunities: the High-Performance Computing Internship Program (HIP) and the Faculty Immersion Experience (FIX). These 10-week experiences are offered in collaboration with more than a dozen DoD hosting organizations nationwide. Both programs seek to strengthen DoD and academic collaboration, enhance research capabilities, and encourage broader university-level participation in high-end computing.

---

Applications open in October 2025!

### **[Krell Institute Fellowships](#)**

Krell Institute supports technology-based education and information programs with technical assistance, management expertise and communication products. We collaborate with agencies and institutions to foster the nation's competitive advantage in science and engineering.

---

Various application deadlines

### **[U.S. Naval Research Laboratory Student Programs](#)**

NRL participates in several Student Programs, each with their own features and requirements. Select a program for more information and learn how to apply for each one.

---

Application due February 15, 2025 • Various locations

### **[ACCESS Student Training and Engagement Program \(STEP\)](#)**

Applications for the 2025 ACCESS Student Training and Engagement Program (STEP) are now open! Undergraduates or early-career grad students interested in pursuing careers in cyberinfrastructure are encouraged to apply.

---

Application due February 15, 2025 • West Lafayette, IN

### **[RCAC CI-XP internship](#)**

The Anvil Research Experiences for Undergraduates (REU) program is part of the Rosen Center for Advanced Computing (RCAC) CI-XP student program. The programs purpose is to provide work opportunities and real workplace experience that enhances student's education through the development of professional skills, responsibilities, habits, attitudes, self-confidence, and self-development. This program aims at developing the next generation workforce in advanced computing and cyberinfrastructure technologies. It offers students from diverse backgrounds, the opportunity to gain the knowledge and skills necessary to build and support advanced research computing systems and scientific applications. As part of RCAC's decade long successful student apprentice program, the REU students will learn by doing, working on the National Science Foundation funded Anvil system in a team environment and mentored by cyberinfrastructure professionals.

---

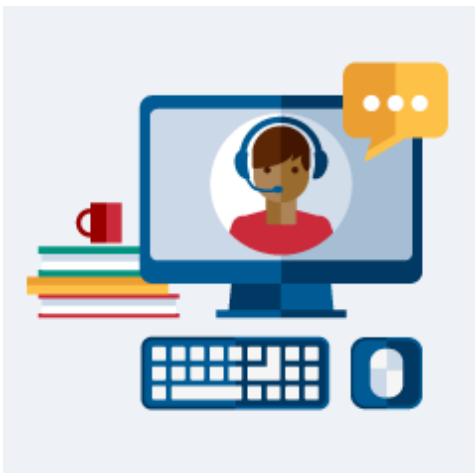
Mon-Tue, April 14-15 • Case Western University | Hybrid

### **[Midwest RCD Annual Meeting Student Experience Program](#)**

Applications are now being accepted for the 2025 Midwest RCD Student Experience Program.

---

## Connect with the Midwest RCD



### **Office Hours with the Program Office at IU**

Join us any Tuesday at 11 a.m. Eastern. No registration needed, just click on the Zoom link or use the add to calendar link.

**[Add Tuesdays to calendar.](#)** →

**[Tuesdays at 11 a.m. Zoom.](#)** →

Join/Follow the new LinkedIn page

## Upcoming Related Events and Opportunities

Know an event to include here? [Submit your Midwest RCD-related event or opportunity.](#)

---

Various • Online submission

### **[ACCESS Events & Training](#)**

ACCESS is an acronym that stands for “Advanced Cyberinfrastructure Coordination Ecosystem: Services & Support.” ACCESS is a program established and funded by the National Science Foundation (NSF) to help researchers and educators utilize the nation’s advanced computing systems and services. Almost any computer application that requires more than a desktop or laptop could qualify as needing an advanced computing system.

---

Tue-Wed, February 25-26 • Indianapolis, IN

### **[Next-Generation Data Center Workshop](#)**

Plan to attend the inaugural Next-Gen DC workshop, a program of the Midwest RCD. Register your interest and topic priorities via the google doc on the workshop webpage.

---

Mon-Tue, April 14-15 • Case Western University | Hybrid

### **[Midwest RCD Consortium Annual Meeting](#)**

Plan to join us at beautiful Case Western Reserve University in Cleveland, Ohio.

---



Sun-Thurs, July 20-24, 2025 • Columbus, OH

## [PEARC25 Conference](#)

ACM PEARC25 will take place in Columbus, Ohio from July 20 – 24, 2025, and will explore the current practice and experience in advanced research computing, including workforce development, training, diversity, applications and software, and systems and software.

---

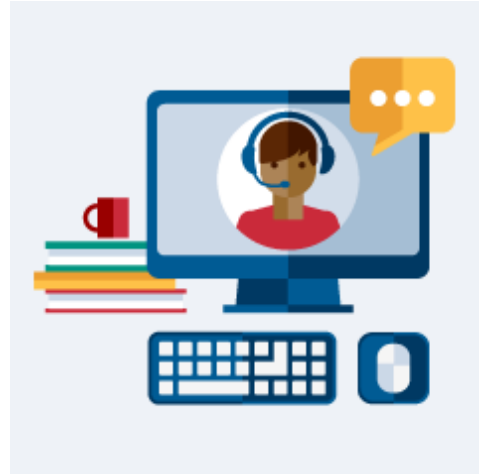
## Connect with the Community

[Slack](#) | [Join Slack](#) →

[LinkedIn Group](#) | [Page](#) →

[Join Mailing List](#) →

[Forward this Email](#)



## Next-Gen DC Affinity Group

The Next-Generation Data Center group focuses on learning about advancements in facilities and operations of data centers.

[Join the Next-Gen DC Affinity Group](#) →

## IWE Affinity Group

We strive to build an inclusive and equitable culture which will promote and increase diversity. This group is being created to ensure that there is diversity in committees, events (annual meetings), and leadership positions.

[Join the IWE Affinity Group](#) →

## ROI Affinity Group

This group focuses on approaches to gauging impact as well as quantitative and qualitative measures needed to communicate the benefits of investments in cyberinfrastructure on our campuses.

[Join the ROI Affinity Group →](#)

## Scientific Cloud Affinity Group

This group focuses on how HPC centers approach cloud computing to support increasingly diverse scientific and engineering research and education endeavors and what skill sets CI professionals will need to support cloud workflows and data management.

[Join the Scientific Cloud Affinity Group →](#)

Help Grow the Midwest RCD Consortium: Forward This Newsletter to Your Students & Colleagues



## About the Midwest Research Computing and Data Consortium

Regional stakeholders working collectively in a trusted forum can shape the future by working collectively on topics of mutual interest, by onboarding organizations that find value in the mission of the organization, by sharing information transparently, and by providing opportunities for CI professionals staff members in our organization to contribute, to be mentored, to belong to a cohort, and to become leaders.

[Read more about Midwest RCD](#) →



## RCN:CIP: Midwest Research Computing and Data Consortium

This material is based upon work supported by the National Science Foundation under Grant No. 2227627. Any opinions, findings, and conclusions or recommendations expressed in this material are those of the authors and do not necessarily reflect the views of the National Science Foundation.

[NSF Award information](#) →



Indiana University  
107 S. Indiana Ave  
Bloomington, IN 47405