

## OpenInfra Days North America at IU Indianapolis

Midwest RCD consortium members: IU Pervasive Technology Institute is happy to be sponsoring this event in the Midwest. Please join us (early-bird registration ends September 6). There are opportunities for folks from diverse backgrounds to register for free (see website link in events section below). There may also be funds available from Midwest RCD. [Apply here](#).

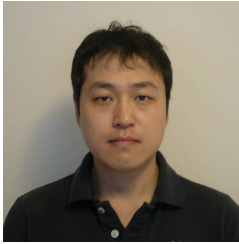
# Midwest Research Computing and Data Consortium

## Midwest RCD Newsletter

August 22, 2024

Help grow the Midwest RCD Consortium: forward this newsletter to your students and colleagues

Join/Follow the new LinkedIn page



## Midwest RCD Profile Spotlight: Doosoo Yoon

Doosoo Yoon, Research Computational Facilitator at the University of Iowa

Series: Exploring the Landscape of Midwest Research Computing and Data Consortium

This is a series where we're diving into the world of the Midwest Research Computing and Data Consortium, exploring its members, the challenges, and future prospects. We had the opportunity to speak with Doosoo Yoon, Research Computational Facilitator, who shared his insights on the field.

Doosoon is a member of the Midwest RCD slack instance, contact him there if you'd like to collaborate or learn more about his work.

[Read the interview with Doosoo Yoon](#) →

[Recommend a colleague for a Profile Spotlight interview](#) →

WE HEAR YOU! We are combing through questions from the annual meeting and answering a few as we are able. One of the questions was about creating an ACCESS account. Below is the best resource we found for helping create an account. There is even a virtual assistant on the page. If all else fails, you can open a support ticket.

[Create an ACCESS account](#)

Create a support ticket

*Your affinity groups at work.*

## DEI Affinity Group: Creating an Inclusive Work Environment

Share these short, closed-captioned videos with your colleagues!

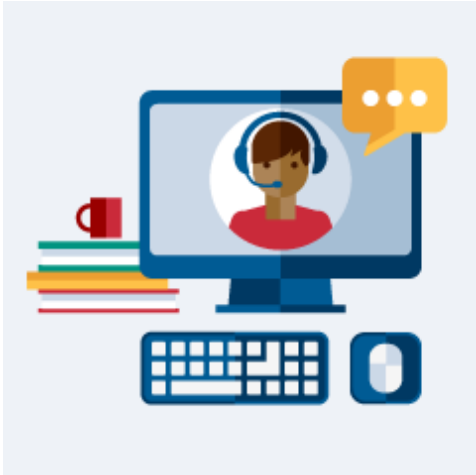
Inclusive diversity is the process of building inclusive work places by promoting collaboration, creativity, innovation, fairness, and respect in an environment where all employees believe they belong.

Tip #1

### Try it Now - Tip #1!



## Connect with the Midwest RCD



### Office Hours with the Program Office at IU

Upcoming sessions:

- **August:**
  - Friday the 23rd | 10 a.m. ET
  - Tuesday the 27th | 11 a.m. ET
  - Friday the 30th | 10 a.m. ET
- **September:**
  - Tuesday the 3rd | 11 a.m. ET
  - Friday the 6th | 10 a.m. ET
  - Tuesday the 10th | 11 a.m. ET
  - Friday the 13th | 10 a.m. ET
  - Tuesday the 17th | 11 a.m. ET
  - Friday the 20th | 10 a.m. ET
  - Tuesday the 24th | 11 a.m. ET
  - Friday the 27th | 10 a.m. ET

No registration needed, just click on the correct Zoom link on any of the days/times listed.

[Add Tuesdays to calendar.](#) →

[Tuesdays at 11 a.m. Zoom.](#) →

[Add Fridays to calendar.](#) →

[Fridays at 10 a.m. Zoom.](#) →

## DEI Affinity Group

We strive to build an inclusive and equitable culture which will promote and increase diversity. This group is being created to ensure that there is diversity in committees, events (annual meetings), and leadership positions.

[Join the DEI Affinity Group](#) →

## ROI Affinity Group

This group focuses on approaches to gauging impact as well as quantitative and qualitative measures needed to communicate the benefits of investments in cyberinfrastructure on our campuses.

[Join the ROI Affinity Group](#) →

## Scientific Cloud Affinity Group

This group focuses on how HPC centers approach cloud computing to support increasingly diverse scientific and engineering research and education endeavors and what skill sets CI professionals will need to support cloud workflows and data management.

[Join the Scientific Cloud Affinity Group](#) →

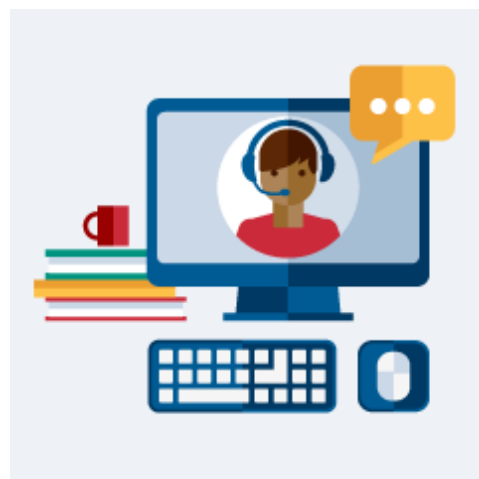
## Connect with the Community

[Slack](#) | [Join Slack](#) →

[LinkedIn Group](#) | [Page](#) →

[Join Mailing List](#) →

[Forward this Email](#)



## Upcoming Related Events and Opportunities

Know an event to include here? [Submit your Midwest RCD-related event or opportunity.](#)

---

Various • Online submission

### [ACCESS Events & Training](#)

ACCESS is an acronym that stands for “Advanced Cyberinfrastructure Coordination Ecosystem: Services & Support.” ACCESS is a program established and funded by the National Science Foundation (NSF) to help researchers and educators utilize the nation’s advanced computing systems and services. Almost any computer application that requires more than a desktop or laptop could qualify as needing an advanced computing system.

---

Tues-Thurs, October 8-10 • Bozeman, MT

### [Science Gateways 2024 Annual Conference](#)

Gateways 2024 is an opportunity for users, developers, and providers to showcase their science gateways accommodating teaching, empowering and engaging research, and providing technologies to various communities. It will also offer diverse options for sharing and publishing work and networking in the community.

---

Tue-Wed, October 15-16 • Indianapolis, IN

### [OpenInfra Days North America at Indiana University](#)

OpenInfra Days NA is a great opportunity to hear directly from prominent open infrastructure leaders, learn from user stories, network, and get plugged into your local community. **Early-bird registration closes September 6.**

---

Sun-Fri, November 17-22 • Atlanta, GA

### [The International Conference for High Performance Computing, Networking, Storage, and Analysis \(SC24\)](#)

The SC program is designed to share best practices in areas such as: algorithms; applications; architectures and networks; clouds and distributed computing; data analytics, visualization, and storage; machine learning and HPC; performance; programming systems; system software; and state of

the practice in large-scale deployment and integration. **Regular housing and registration closes October 11.**



## About the Midwest Research Computing and Data Consortium

Regional stakeholders working collectively in a trusted forum can shape the future by working collectively on topics of mutual interest, by onboarding organizations that find value in the mission of the organization, by sharing information transparently, and by providing opportunities for CI professionals staff members in our organization to contribute, to be mentored, to belong to a cohort, and to become leaders.

[Read more about Midwest RCD](#) →



## RCN:CIP: Midwest Research Computing and Data Consortium

This material is based upon work supported by the National Science Foundation under Grant No. 2227627.

Any opinions, findings, and conclusions or recommendations expressed in this material are those of the authors and do not necessarily reflect the views of the National Science Foundation.

[NSF Award information](#) →

---



Indiana University  
107 S. Indiana Ave  
Bloomington, IN 47405