

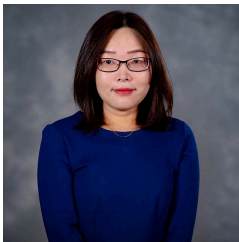
# Midwest Research Computing and Data Consortium



## Midwest RCD Newsletter

June 27, 2024

Help grow the Midwest RCD Consortium: forward this newsletter to your students and colleagues



### Midwest RCD Profile Spotlight: Summer Wang

Summer Wang, Senior Client Engineer at the Ohio Supercomputer Center (OSC) at The Ohio State University

Series: Exploring the Landscape of Midwest Research Computing and Data Consortium

This is a series where we're diving into the world of the Midwest Research Computing and Data Consortium, exploring its members, the challenges, and future prospects. We had the opportunity to speak with Summer Wang, Senior Client Engineer, who shared her insights on the field.

Summer is a member of the Midwest RCD slack instance, contact her there if you'd like to collaborate or learn more about her work.

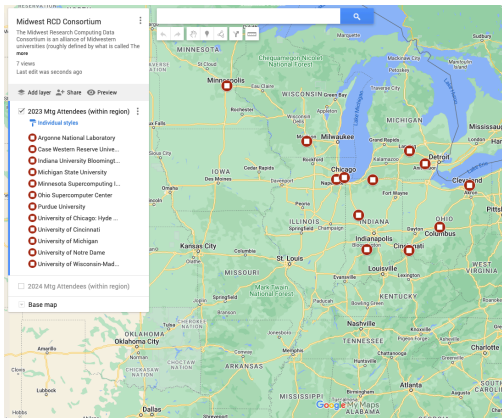
[Read the interview with Summer Wang](#) >

[Recommend a colleague for a Profile Spotlight interview](#) >



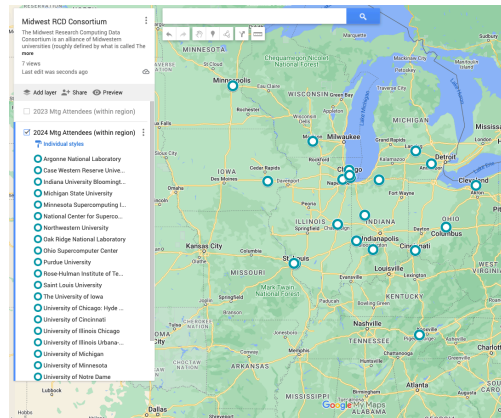
## Midwest RCD Annual Meeting Was Held May 1

The annual meeting conjured substantial growth with 75 attendees representing 22 institutions, plus the National Science Foundation and University of Oklahoma, compared to the 2023 meeting which had 62 attendees representing 14 institutions.



Map of 2023 annual meeting participating institutions (within region).

[Link to interactive google map.](#) >



Map of 2024 annual meeting participating institutions (within region).

[Help us grow. Forward this newsletter to another institution!](#) >

Students had several roles during the 2024 Midwest RCD Annual Meeting. Graduate students gave a presentation on "Patra Model Cards for ICICLE" and led a social networking activity based on Net.Create. Those who participated in the Student Experience Program met with mentors individually, networked with peers and cyberinfrastructure professionals during breaks, and gave the consortium feedback on what they gained from the experience and how the experience might benefit more students in the future.



*Student participants are recognized during the annual meeting on May 1.*

[Learn more about the Student Experience Program](#) >



*Student Experience Program students and mentors during the reception.*

[Apply to participate in the 2025 Student Experience Program](#) >

## Connect with the Midwest RCD

### **DEI Affinity Group**

We strive to build an inclusive and equitable culture which will promote and increase diversity. This group is being created to ensure that there is diversity in committees, events (annual meetings), and leadership positions.

[\*\*Join the DEI Affinity Group\*\*](#) >

## ROI Affinity Group

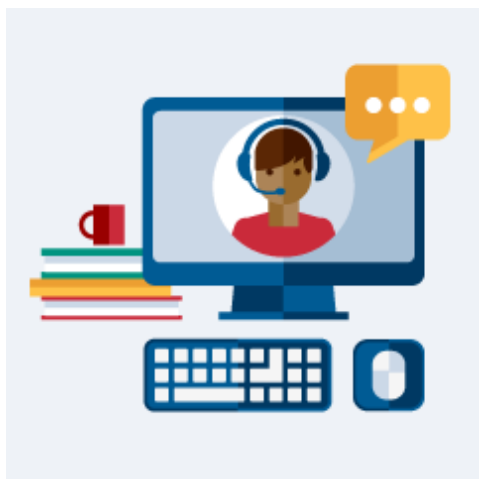
This group focuses on approaches to gauging impact as well as quantitative and qualitative measures needed to communicate the benefits of investments in cyberinfrastructure on our campuses.

[Join the ROI Affinity Group](#) >

## Scientific Cloud Affinity Group

This group focuses on how HPC centers approach cloud computing to support increasingly diverse scientific and engineering research and education endeavors and what skill sets CI professionals will need to support cloud workflows and data management.

[Join the Scientific Cloud Affinity Group](#) >



### Starting in July-NEW TUESDAY Office Hours with the Program Office at IU

Upcoming sessions:

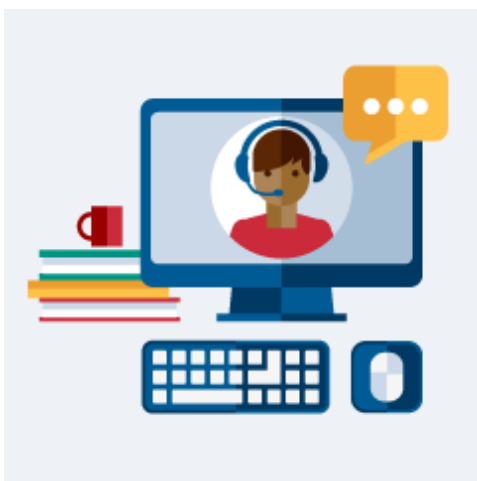
- Tuesday, July 2
- Tuesday, July 9
- Tuesday, July 16
- Tuesday, July 23
- Tuesday, July 30

Any and all Midwest RCD topics are open for discussion!

No registration needed, just click on the Zoom link between 11 a.m. - 12 p.m. EDT on the days listed above.

[Add to Outlook calendar.](#) >

[Click here to join via Zoom.](#) >



## Friday Office Hours with the Program Office at IU

Upcoming sessions:

- Friday, June 28
- Friday, July 5
- Friday, July 12
- Friday, July 19
- Friday, July 26

Any and all Midwest RCD topics are open for discussion!

No registration needed, just click on the Zoom link between 10 - 11 a.m. EDT on the days listed above.

[Add to Outlook calendar.](#) >

[Click here to join via Zoom.](#) >

## Upcoming Related Events and Opportunities

Know an event to include here? [Submit your Midwest RCD related event and opportunities info.](#)

---

Sun, July 21 • Providence RI

### [RCD Nexus Day at PEARC'24](#)

RCD Nexus Day is offering travel support to attend RCD Nexus Day and the full PEARC24 conference (travel, lodging, registration, and meals) with preference given to smaller, less-resourced, or emerging RCD programs, and minority-serving institutions.

**The deadline to request travel funding support is May 17, 2024.**

---

Various • Online submission

## **[ACCESS Events & Training](#)**

ACCESS is an acronym that stands for “Advanced Cyberinfrastructure Coordination Ecosystem: Services & Support.” ACCESS is a program established and funded by the National Science Foundation (NSF) to help researchers and educators utilize the nation’s advanced computing systems and services. Almost any computer application that requires more than a desktop or laptop could qualify as needing an advanced computing system.

---

Tue-Thurs, October 8-10 • Bozeman, MT

## **[Science Gateways 2024 Annual Conference-Call for Participation](#)**

Gateways 2024 is an opportunity for users, developers, and providers to showcase their science gateways accommodating teaching, empowering and engaging research, and providing technologies to various communities. It will also offer diverse options for sharing and publishing work and networking in the community.

---

## **Connect with the Community**

[Slack](#) | [Join Slack](#) >

[LinkedIn Group](#) >

[X](#) >

[Mailing List](#) >

[Forward this Email](#) >



## **About the Midwest Research Computing and Data Consortium**

Regional stakeholders working collectively in a trusted forum can shape the future by working collectively on topics of mutual interest, by onboarding organizations that find value in the mission of the organization, by sharing information transparently, and by providing opportunities for CI

professionals staff members in our organization to contribute, to be mentored, to belong to a cohort, and to become leaders.

[Read more about Midwest RCD](#) >



## RCN:CIP: Midwest Research Computing and Data Consortium

This material is based upon work supported by the National Science Foundation under Grant No. 2227627. Any opinions, findings, and conclusions or recommendations expressed in this material are those of the authors and do not necessarily reflect the views of the National Science Foundation.

[NSF Award information](#) >



Indiana University  
107 S. Indiana Ave  
Bloomington, IN 47405