

# Midwest Research Computing and Data Consortium



## Midwest RCD Newsletter

May 10, 2024

Help grow the Midwest RCD Consortium: forward this newsletter to your students and colleagues



### Midwest RCD Profile Spotlight: Jess Haney

Jess Haney, Research System Engineer at the National Center for Supercomputing Applications (NCSA) at the University of Illinois Urbana-Champaign

Series: Exploring the Landscape of Midwest Research Computing and Data Consortium

This is a series where we're diving into the world of the Midwest Research Computing and Data Consortium, exploring its members, the challenges, and future prospects. We had the opportunity to speak with Jess Haney, Research System Engineer, who shared her insights on the field.

[Read the interview with Jess Haney](#) >

[Recommend a colleague for a Profile Spotlight interview](#) >



*I'm reaching out to solicit interest in the Scientific Cloud Affinity Group. There is a strong foundation of research-centric clouds and HPC-adjacent cloud services at our sites and having a setting to discuss relevant cloud topics, issues, and events would strengthen our community.*

*Moreover, it would allow us to more easily establish and participate in Midwest RCD activities like the staff residency Indiana University and University of Illinois Urbana-Champaign did in 2023 to exchange ideas and practices in our respective research cloud environments.*

*Please visit the Scientific Cloud Affinity*

*group site at the link below and consider joining the group so we can work together for a better cloud research experience overall!*

Jeremy Fischer  
On behalf of the Midwest RCD Scientific Cloud Affinity Group

[Learn more and join the Scientific Cloud Affinity Group](#)



## **Midwest RCD Annual Meeting Was Held May 1**

The annual meeting conjured substantial growth with 75 attendees representing 22 institutions, plus the National Science Foundation and University of Oklahoma, compared to the 2023 meeting which had 62 attendees representing 14 institutions.

The meeting included lightning talks and presentations by our NSF Program Officer, Thomas Gulbransen, cyberinfrastructure training guru, Henry Neeman from University of Oklahoma, and Senior Computer Scientist, Charlie Catlett from Argonne National Laboratory, as well as sessions on workforce development, return on investment, and artificial intelligence.

Our thanks to all the presenters, student mentors, and attendees who helped make the annual meeting a success. Reviewing the Next Steps document created collaboratively by all the attendees, we have work to do to enable more collaboration among consortium members as well as to diversify and grow the consortium, but we're making grand strides toward our collective goals.

Use the archive link below to view PDFs of the presentations.



*Midwest RCD steering committee members, program manager, and NSFlisten to the return on investment panel Program Officer.*

*Audience members engaged as they listen to the return on investment panel presentations.*

[View the sched archive](#) >

[View archive of ROI presentation](#) >

## Connect with the Midwest RCD

### DEI Affinity Group

We strive to build an inclusive and equitable culture which will promote and increase diversity. This group is being created to ensure that there is diversity in committees, events (annual meetings), and leadership positions.

[Join the DEI Affinity Group](#) >

### ROI Affinity Group

This group focuses on approaches to gauging impact as well as quantitative and qualitative measures needed to communicate the benefits of investments in cyberinfrastructure on our campuses.

[Join the ROI Affinity Group](#) >

## Scientific Cloud Affinity Group

This group focuses on how HPC centers approach cloud computing to support increasingly diverse scientific and engineering research and education endeavors and what skill sets CI professionals will need to support cloud workflows and data management.

[Join the Scientific Cloud Affinity Group](#) >

## Upcoming Related Events and Opportunities

Know an event to include here? [Submit your Midwest RCD related event and opportunities info.](#)

---

Sun, July 21 • Providence RI

### [RCD Nexus Day at PEARC'24](#)

RCD Nexus Day is offering travel support to attend RCD Nexus Day and the full PEARC24 conference (travel, lodging, registration, and meals) with preference given to smaller, less-resourced, or emerging RCD programs, and minority-serving institutions.

**The deadline to request travel funding support is May 17, 2024.**

---

Tue, October 1 • Online submission

### [ACCESS CCEP Travel Award Request](#)

CCEP (CSSN Community Engagement Program) gives travel rewards to ANYONE for a multitude of opportunities (community engagement, feedback forums, documentation) and so much more!

Submissions are reviewed once a month. **Please submit by October 1 for SC24 or two months prior to the conference that you desire to attend.**

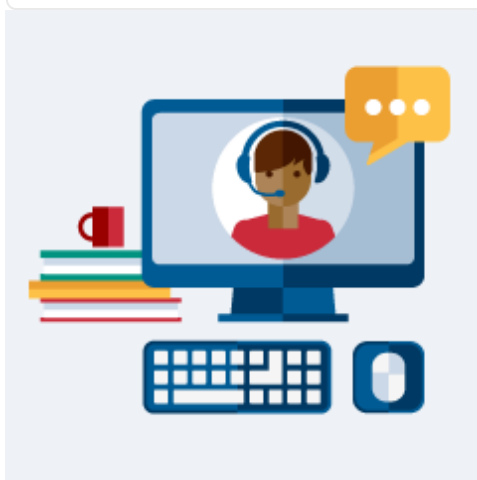
---

Tue-Thurs, October 8-10 • Bozeman, MT

### **[Science Gateways 2024 Annual Conference-Call for Participation](#)**

Gateways 2024 is an opportunity for users, developers, and providers to showcase their science gateways accommodating teaching, empowering and engaging research, and providing technologies to various communities. It will also offer diverse options for sharing and publishing work and networking in the community.

---



## **Office Hours with the Program Office at IU**

Upcoming sessions:

- ~~Friday, May 24~~ canceled
- Friday, May 31
- Friday, June 7
- Friday, June 14
- Friday, June 21

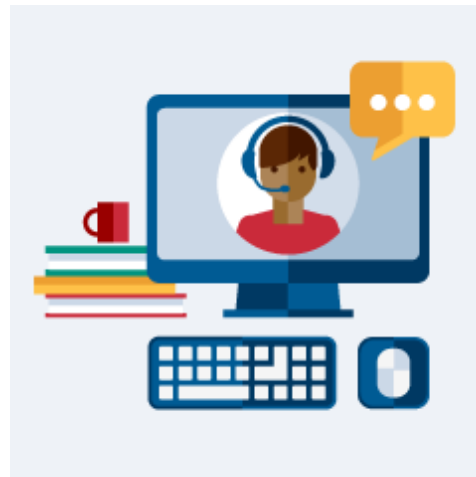
No registration needed, just click on the Zoom link between 10 - 11 a.m. EDT on the days listed above.

**[Add to Outlook calendar.](#)** >

**[Click here to join via Zoom.](#)** >

## Connect with the Community

- [Slack | Join Slack](#) >
- [LinkedIn Group](#) >
- [X](#) >
- [Mailing List](#) >
- [Forward this Email](#)



## About the Midwest Research Computing and Data Consortium

Regional stakeholders working collectively in a trusted forum can shape the future by working collectively on topics of mutual interest, by onboarding organizations that find value in the mission of the organization, by sharing information transparently, and by providing opportunities for CI professionals staff members in our organization to contribute, to be mentored, to belong to a cohort, and to become leaders.

[Read more about Midwest RCD](#) >



### RCN:CIP: Midwest Research Computing and Data Consortium

This material is based upon work supported by the National Science Foundation under Grant No. 2227627. Any opinions, findings, and conclusions or recommendations expressed in this material are those of

the authors and do not necessarily reflect the views of the National Science Foundation.

[NSF Award information](#) >

---

