

## IMPORTANT

It was brought to our attention that there was an error in a link to our Profile Spotlight. Please find the corrected link in the version of the January Newsletter.

# Midwest Research Computing and Data Consortium



## MW-RCD Newsletter

January 15, 2024

**About the Midwest Research Computing and Data Consortium**

Regional stakeholders working collectively in a trusted forum can shape the future by working collectively on topics of mutual interest, by onboarding organizations that find value in the mission of the organization, by sharing information transparently, and by providing opportunities for CI professional staff members in our organization to contribute, to be mentored, to belong to a cohort, and to become leaders.

[Read more about MW-RCD](#)



### **MW-RCD Profile Spotlight: Todd Shechter**

Todd Shechter, Chief Technology Officer at University of Wisconsin, Madison

Series: Exploring the Landscape of Midwest Research Computing and Data Consortium

This is a series where we're diving into the world of the Midwest Research Computing and Data Consortium, exploring its members, the challenges, and future prospects. We had the opportunity to speak with Todd Shechter, Chief Technology Officer at University of Wisconsin, Madison, who shared his insights on the field.

[Read the interview with Todd Shechter here.](#) >

### **Student Experience Program**

This program is for graduate and undergraduate students from computing and computational science fields attending institutions of higher education within the Midwest. The purpose is to provide opportunities for diverse students to engage in consortium activities, thus exposing them to a career as a CI professional. In this program, students will shadow a senior leader

and participate in planning for and attending the annual network retreat (April 30 – May 1, 2024 at the Big10 Conference Center in Rosemont, IL). Travel support and a \$250 stipend will be provided for students.

- Applications Due February 5, 2024
- Notification Date: February 15, 2024

## Student Experience Program



### MW-RCD Residency Fellow: Wyatt Madej

In early October 2023, Wyatt Madej was selected as a Midwest Research Computing and Data Consortium Residency Fellow. On Oct 29 through Nov 4, he completed a weeklong residency at the National Center for Supercomputing Applications at the University of Illinois Urbana-Champaign.

Below is Wyatt's summary of his visit and a description of what he learned and how he plans to implement his new-found knowledge.

[Read Wyatt's summary here.](#) >

FEBRUARY

2

### MW-RCD OFFICE HOURS

Friday, February 2, 2024 | 10 - 11 a.m. EST

Interested in getting funding to sponsor an RCD professional on your campus or for a community of practice?

- Funds available to host a fellow RCD professional for a campus visit
- Funds available for a midwest community of practice

[Add to Outlook Calendar](#)

[Open in Zoom now \(Friday, February 2 at 10 a.m. EST\).](#)



## 2024 ANNUAL SPRING MEETING

**Tuesday, April 30 (networking)**

**and**

**Wednesday, May 1, 2024 (meeting)**

The 2024 Annual Spring Meeting (Annual Network Retreat) will be held from April 30, 2024 - May 1, 2024 both in-person and online at the Big 10 Conference Center in Rosemont, IL. The agenda will be similar in scale to previous MWRCD annual meetings and will focus on talks of mutual interest as well as advancing the goals of the accelerator programs.

- April 30, 2024 - May 1, 2024
- B1G Conference Center at 5440 Park Place, Rosemont, IL 60018
- Travel Support Available

[2024 Annual Spring Meeting](#)

[Register Now](#)

## DEI Affinity Group

We strive to build an inclusive and equitable culture which will promote and increase diversity. This group is being created to ensure that there is diversity in committees, events (network retreats), and leadership positions.

[Join the DEI Affinity Group](#)

## ROI Affinity Group

This group focuses on approaches to gauging impact as well as quantitative and qualitative measures needed to communicate the benefits of investments in cyberinfrastructure on our campuses.

[Join the ROI Affintiy Group](#)

## Connect with the MW-RCD

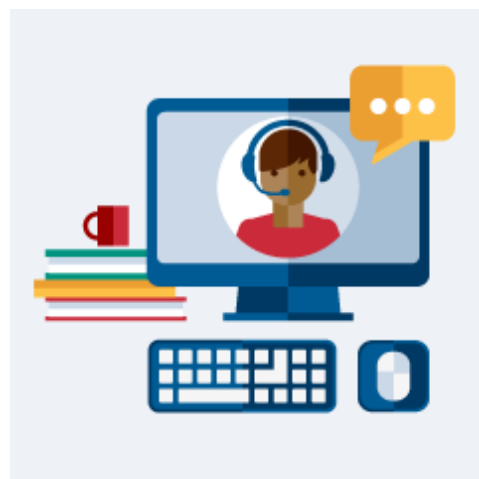
[MW-RCD on Slack](#) >

[LinkedIn](#) >

[X](#) >

[Mastodon](#) >

[Mailing List](#) >



## MW-RCD Related Events

To have your MW-RCD related event listed here, [send us the relevant information](#).



**ICICLE**  
Intelligent CyberInfrastructure with  
Computational Learning in the Environment



Weekly DEI Updates

## [ICICLE YouTube Channel](#)

Led by The Ohio State University, the National Science Foundation funded AI institute for Intelligent CyberInfrastructure with Computational Learning in the Environment (ICICLE) will build the next generation of Cyberinfrastructure to render Artificial Intelligence (AI) more accessible to everyone and drive its further democratization in the larger society.

The widespread adoption of Artificial Intelligence (AI) fueling advances in science, education, and commerce has been driven not only by the ability to aggregate data from a wide range of sources, but also by the availability of increasingly powerful Cyberinfrastructure (CI) supporting AI advances. As CI becomes more complex and heterogeneous, end users of the technology face a bewildering set of choices in applying AI to leverage insightful analytics, modeling complex systems, or enabling automation.

The ICICLE project is funded by the National Science Foundation (NSF) under grant number OAC-2112606.



Thursday, April 4 • 2 - 4:30 p.m. • Online

## [Getting Started with Jetstream2](#)

This workshop targets researchers and educators, even those with no previous cloud computing experience.



## RCN:CIP: Midwest Research Computing and Data Consortium

This material is based upon work supported by the National Science Foundation under Grant No. 2227627. Any opinions, findings, and conclusions or recommendations expressed in this material are those of the authors and do not necessarily reflect the views of the National Science Foundation.

[NSF Award information](#) >



Indiana University  
107 S. Indiana Ave  
Bloomington, IN 47405