

Midwest Research Computing and Data Consortium



MW-RCD Newsletter

December 12, 2023

About the Midwest Research Computing and Data Consortium

Regional stakeholders working collectively in a trusted forum can shape the future by working collectively on topics of mutual interest, by onboarding organizations that find value in the mission of the organization, by sharing information transparently, and by providing

opportunities for CI professional staff members in our organization to contribute, to be mentored, to belong to a cohort, and to become leaders.

[Read more about MW-RCD](#)



MW-RCD Profile Spotlight: Lee Liming

Lee Liming, Director of Professional Services (Globus) at the University of Chicago

Series: Exploring the Landscape of Midwest Research Computing and Data Consortium

This is a series where we're diving into the world of the Midwest Research Computing and Data Consortium, exploring its members, the challenges, and future prospects. We had the opportunity to speak with Lee Liming, Director of Professional Services (Globus) at the University of Chicago, who shared his insights on the field.

[Read the interview with Lee Liming here.](#) >

Save the Date - Annual Retreat in 2024

The 2024 Annual Retreat will be held April 30, 2024 - May 1, 2024 at the Big 10 conference center in Rosemont, IL. Travel funds are available.

Registration and more details coming in January 2024.



MW-RCD OFFICE HOURS

Friday, January 5, 2024 | 10 - 11 a.m. EST

Interested in getting funding to sponsor an RCD professional on your campus or for a community of practice?

- Funds available to host a fellow RCD professional for a campus visit
- Funds available for a midwest community of practice

[Add to Outlook Calendar](#)

[Open in Zoom now \(Friday, January 5 at 10 a.m. EST\).](#)

DEI Affinity Group

We strive to build an inclusive and equitable culture which will promote and increase diversity. This group is being created to ensure that there is diversity in committees, events (network retreats), and leadership positions.

[Join the DEI Affinity Group](#)

ROI Affinity Group

This group focuses on approaches to gauging impact as well as quantitative and qualitative measures needed to communicate the benefits of investments in cyberinfrastructure on our campuses.

[Join the ROI Affintiy Group](#)

Connect with the MW-RCD

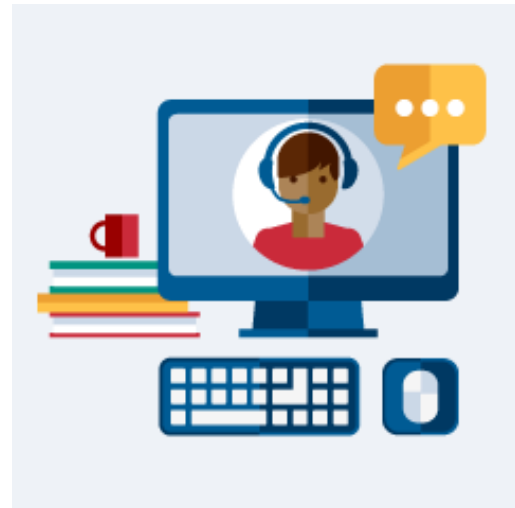
[MW-RCD on Slack](#) >

[LinkedIn](#) >

[X](#) >

[Mastodon](#) >

[Mailing List](#) >



MW-RCD Related Events

To have your MW-RCD related event listed here, [send us the relevant information](#).



ICICLE
Intelligent CyberInfrastructure with
Computational Learning in the Environment



Weekly DEI Updates

[ICICLE YouTube Channel](#)

Led by The Ohio State University, the National Science Foundation funded AI institute for Intelligent Cyberinfrastructure with Computational Learning

in the Environment (ICICLE) will build the next generation of Cyberinfrastructure to render Artificial Intelligence (AI) more accessible to everyone and drive its further democratization in the larger society.

The widespread adoption of Artificial Intelligence (AI) fueling advances in science, education, and commerce has been driven not only by the ability to aggregate data from a wide range of sources, but also by the availability of increasingly powerful Cyberinfrastructure (CI) supporting AI advances. As CI becomes more complex and heterogeneous, end users of the technology face a bewildering set of choices in applying AI to leverage insightful analytics, modeling complex systems, or enabling automation.

The ICICLE project is funded by the National Science Foundation (NSF) under grant number OAC-2112606.



Thursday, April 4 • 2 - 4:30 p.m. • Online

[Getting Started with Jetstream2](#)

This workshop targets researchers and educators, even those with no previous cloud computing experience.



RCN:CIP: Midwest Research Computing and Data Consortium

This material is based upon work supported by the National Science Foundation under Grant No. 2227627. Any opinions, findings, and conclusions or recommendations expressed in this material are those of

the authors and do not necessarily reflect the views of the National Science Foundation.

[NSF Award information](#) >



Indiana University
107 S. Indiana Ave
Bloomington, IN 47405

Learn why we're including this: go.iu.edu/emailsafety.
[Unsubscribe Impettit@indiana.edu](mailto:Impettit@indiana.edu) from emails like this.

[View online](#)