

Midwest Research Computing and Data Consortium



MW-RCD Newsletter

November 3, 2023

About the Midwest Research Computing and Data Consortium

Regional stakeholders working collectively in a trusted forum can shape the future by working collectively on topics of mutual interest, by onboarding organizations that find value in the mission of the organization, by sharing information transparently, and by providing opportunities for CI professional staff members in our organization to contribute, to be

mentored, to belong to a cohort, and to become leaders.

[Read more about MW-RCD](#)



MW-RCD Profile Spotlight: Jim Ferguson

Jim Ferguson, Director of Outreach & Training for Research Computing at the University of Minnesota

Series: Exploring the Landscape of Midwest Research Computing and Data Consortium

This is a series where we're diving into the world of the Midwest Research Computing and Data Consortium, exploring its members, the challenges, and future prospects. We had the opportunity to speak with Jim Ferguson, Director of Outreach & Training for Research Computing at the University of Minnesota, who shared his insights on the field.

[Read the interview with Jim Ferguson here.](#) >

November 15

2

MW-RCD AT SC23 CONFERENCE

**Wednesday, November 15, 2023 from 2 - 3 p.m.
MT**

Meet with MW-RCD colleagues at the Indiana University booth (#609) at the Supercomputing

pm
MT

2023 conference in Denver, CO.

This event is open to all who are interested in the MW-RCD alliance.

Cloud Residency Fellows

The Indiana University Research Cloud Infrastructure team met with representatives of University of Illinois Champaign-Urbana over two days on August 30th and 31st, 2023. The goal of this residency program funded by the Midwest Research Computing and Data Consortium was to establish a relationship and rapport between research cloud staff at these institutions and create a free flow of ideas and information. Ultimately, the goal with these efforts is to create better standards of practice and to share successes and failures for creating better research environments on cloud resources.

[The details and summary are available here](#)

2nd FRIDAY

10

CALL FOR PARTICIPATION

Return on CI Investment Affinity Group

Meetings are 10 a.m. ET
2nd Friday of each month

This group focuses on approaches to gauging

am ET

impact as well as quantitative and qualitative measures needed to communicate the benefits of investments in cyberinfrastructure on our campuses.

[Join Return on CI Investment Affinity Group](#)

Connect with the MW-RCD

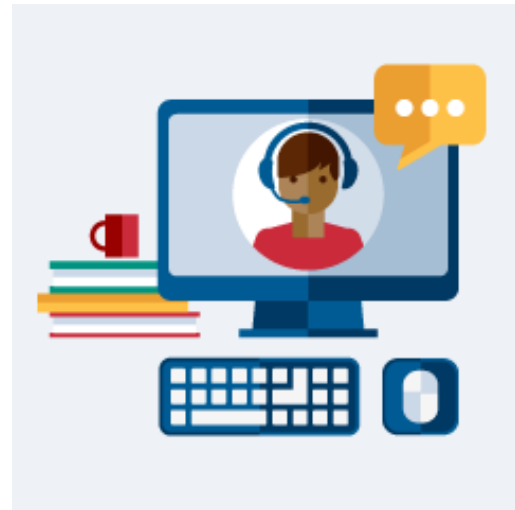
[MW-RCD on Slack](#) >

[LinkedIn](#) >

[X](#) >

[Mastodon](#) >

[Mailing List](#) >



MW-RCD Related Events

To have your MW-RCD related event listed here, [send us the relevant information](#).



ICICLE
Intelligent CyberInfrastructure with
Computational Learning in the Environment



Weekly DEI Updates

[ICICLE YouTube Channel](#)

Led by The Ohio State University, the National Science Foundation funded AI institute for Intelligent Cyberinfrastructure with Computational Learning in the Environment (ICICLE) will build the next generation of Cyberinfrastructure to render Artificial Intelligence (AI) more accessible to everyone and drive its further democratization in the larger society.

The widespread adoption of Artificial Intelligence (AI) fueling advances in science, education, and commerce has been driven not only by the ability to aggregate data from a wide range of sources, but also by the availability of increasingly powerful Cyberinfrastructure (CI) supporting AI advances. As CI becomes more complex and heterogeneous, end users of the technology face a bewildering set of choices in applying AI to leverage insightful analytics, modeling complex systems, or enabling automation.

The ICICLE project is funded by the National Science Foundation (NSF) under grant number OAC-2112606.



Thursday, November 20 and April 4 • 2 - 4:30 p.m. • Online

[Getting Started with Jetstream2](#)

This workshop targets researchers and educators, even those with no previous cloud computing experience.



RCN:CIP: Midwest Research Computing and Data Consortium

This material is based upon work supported by the National Science Foundation under Grant No. 2227627.

Any opinions, findings, and conclusions or recommendations expressed in this material are those of the authors and do not necessarily reflect the views of the National Science Foundation.

[NSF Award information](#) >



Indiana University
107 S. Indiana Ave
Bloomington, IN 47405

[View online](#)