

# Midwest Research Computing and Data Consortium



## MW-RCD Newsletter

October 16, 2023

### About the Midwest Research Computing and Data Consortium

Regional stakeholders working collectively in a trusted forum can shape the future by working collectively on topics of mutual interest, by onboarding organizations that find value in the mission of the organization, by sharing information transparently, and by providing opportunities for CI

professional staff members in our organization to contribute, to be mentored, to belong to a cohort, and to become leaders.

[Read more about MW-RCD](#)



### MW-RCD Profile Spotlight: Karen Tomko

Karen Tomko, Director of Research Software Applications, Ohio Supercomputer Center (OSC)

Series: Exploring the Landscape of Midwest Research Computing and Data Consortium

This is a series where we're diving into the world of the Midwest Research Computing and Data Consortium, exploring its members, the challenges, and future prospects. We had the opportunity to speak with Karen Tomko, Director of Research Software Applications at the Ohio Supercomputer Center, who shared her insights on the field.

Read the interview with Karen Tomko here.

[Read more here.](#) >

### Save the Date: MW-RCD Meetup at SC23

Come by the Indiana University booth (#609) at the Supercomputing 2023 conference in Denver, Colorado on Wednesday, November 15, 2023 from 2:00 PM - 3:00 PM Mountain Time. This event is welcome to all who are interested in the MW-RCD program or who have participated in past

programs.

## Cloud Residency Fellows

The Indiana University Research Cloud Infrastructure team met with representatives of University of Illinois Champaign-Urbana over two days on August 30th and 31st, 2023. The goal of this residency program funded by the Midwest Research Computing and Data Consortium was to establish a relationship and rapport between research cloud staff at these institutions and create a free flow of ideas and information. Ultimately, the goal with these efforts is to create better standards of practice and to share successes and failures for creating better research environments on cloud resources.

[The details and summary are available here.](#)

## Connect with the MW-RCD

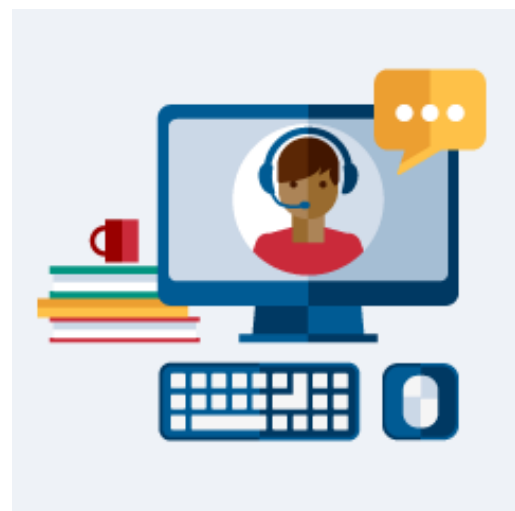
[MW-RCD on Slack](#) >

[LinkedIn](#) >

[Twitter](#) >

[Mastodon](#) >

[Mailing List](#) >



## MW-RDC Related Events

To have your MW-RDC related event listed here, [send us the](#)

[relevant information.](#)



**ICICLE**  
Intelligent CyberInfrastructure with  
Computational Learning in the Environment



Weekly DEI Updates

## [ICICLE YouTube Channel](#)

Led by The Ohio State University, the National Science Foundation funded AI institute for Intelligent Cyberinfrastructure with Computational Learning in the Environment (ICICLE) will build the next generation of Cyberinfrastructure to render Artificial Intelligence (AI) more accessible to everyone and drive its further democratization in the larger society.

The widespread adoption of Artificial Intelligence (AI) fueling advances in science, education, and commerce has been driven not only by the ability to aggregate data from a wide range of sources, but also by the availability of increasingly powerful Cyberinfrastructure (CI) supporting AI advances. As CI becomes more complex and heterogeneous, end users of the technology face a bewildering set of choices in applying AI to leverage insightful analytics, modeling complex systems, or enabling automation.

The ICICLE project is funded by the National Science Foundation (NSF) under grant number OAC-2112606.



Thursday, November 20 and April 4 • 2:00 - 4:30 p.m. • Online

## [Getting Started with Jetstream2](#)

This workshop targets researchers and educators, even those with no previous cloud computing experience.



## RCN:CIP: Midwest Research Computing and Data Consortium

This material is based upon work supported by the National Science Foundation under Grant No. 2227627. Any opinions, findings, and conclusions or recommendations expressed in this material are those of the authors and do not necessarily reflect the views of the National Science Foundation.

[NSF Award information](#) >



Indiana University  
107 S. Indiana Ave  
Bloomington, IN 47405

[View online](#)