

# Midwest Research Computing and Data Consortium



## — MW-RCD Newsletter

August 8, 2023

### About the Midwest Research Computing and Data Consortium

Regional stakeholders working collectively in a trusted forum can shape the future by working collectively on topics of mutual interest, by onboarding organizations that find value in the mission of the organization, by sharing information transparently, and by providing opportunities for CI

professional staff members in our organization to contribute, to be mentored, to belong to a cohort, and to become leaders.

[Read more about MW-RCD](#)



## CALL FOR PARTICIPATION

### CI (CyberInfrastructure) Mentorship Program

The CI Mentorship program is designed to pair RCD professionals from different institutions with each other. \$250 stipend for participating. The mentor/mentee pair will attend an initial workshop at the beginning of the program and will commit to regular, monthly meetings with each other for each academic year.

#### Important dates:

- Mentorship applications due September 1, 2023
- Pairings selected in September 2023
- 1 hour workshop in October 2023
- Network Meeting in Q3 2024 (travel funds provided)
- 1st Cohort completes in June 2024
- Stipend disbursement in July 2024

## [Apply for CI Mentorship Program](#)

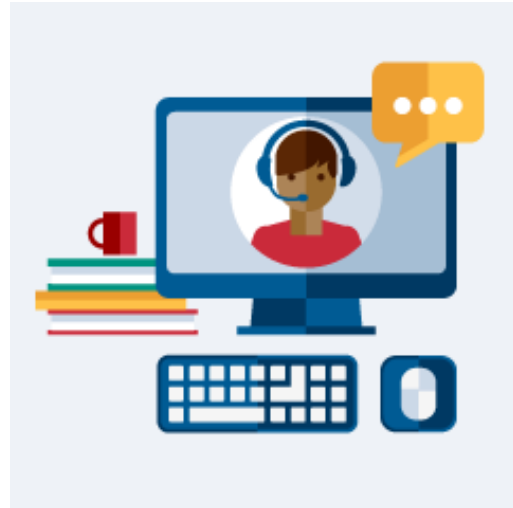
### Connect with the MW-RCD

[MW-RCD on Slack](#) >

[LinkedIn](#) >

[Twitter](#) >

[Mastodon](#) >



MONTHLY

**TBD**

### CALL FOR PARTICIPATION

#### DEI Affinity Group

Meetings times will be determined based on attendee availability

We strive to build an inclusive and equitable culture which will promote and increase diversity. This group is being created to:

- Ensure that there is diversity in committees, events (network retreats), and leadership positions.
- Identify existing programs at our own institutions. Learn about the programs that have succeeded in other institutions

and adopt successful paradigms.

- Involve diverse students in committee work; contributing to a diverse workforce in the early-career phase is an important piece.
- Host a moderated workshop on DEI that forces creative thought about new approaches.
- Curate a set of training opportunities at our individual institutions, national organization, or relevant conferences.

[Join DEI Affinity Group](#)

## **Annual Network Meeting recap**

The basis of network success is an in-person Annual Network Retreat. These retreats are held at locations distributed across the network boundaries and hosted by consortium members. These meetings include talks (we encourage the pairing of senior/junior CI professionals to co-present), panels, and presentations.

On March 2, 2023 the MW-RCD meeting was held at the Ohio Supercomputer Center (OSC) in Columbus, Ohio.

### **Participating attendees included folks from:**

Case Western Reserve University, Indiana University, Michigan State University, Minnesota Supercomputing Institute/ University of Minnesota, Mississippi State University, Ohio Supercomputer Center, Purdue University, The Ohio State University, University of Michigan, University of

Chicago/Argonne National Laboratory, University of Chicago, University of Cincinnati, University of Notre Dame, University of Wisconsin

[Review topics and presenters](#)

## MW-RDC Related Events

To have your MW-RDC related event listed here, [send us the relevant information](#).



September 12-15 • Indiana University - Indianapolis

### [CENTRA 6](#)

The Pervasive Technology Institute (PTI) at Indiana University (IU) is delighted to invite you, our colleagues from around the globe, to the 6th CENTRA meeting.

Wednesday, September 13 • 8:00 a.m. - 5:00 p.m. • IU - Indianapolis

### [Workshop on Globally Situated Perspectives on AI in the Edge-Cloud-HPC Continuum](#)

The workshop aims for a series of short papers that explore artificial intelligence (AI) and edge computing.



Thursday, November 20 and April 4 • 2:00 - 4:30 p.m. • Online

## [Getting Started with Jetstream2](#)

This workshop targets researchers and educators, even those with no previous cloud computing experience.



Indiana University  
107 S. Indiana Ave  
Bloomington, IN 47405

This message is intended for [Impettit@indiana.edu](mailto:Impettit@indiana.edu).  
Learn why we're including this: [go.iu.edu/emailsafety](https://go.iu.edu/emailsafety).  
[Unsubscribe Impettit@indiana.edu](#) from emails like this.

[View online](#)